

Current Issues

- ACT and NCA planning
 - New Territory Plan and Woden District Strategy, including infill areas
 - North Curtin residential area and Diplomatic Estate (horse paddocks)
- Curtin Dementia Village: community consultation process
- Wesley Mission proposal for the Block (across Theodore St from Curtin shops)
- Nature reserve in Curtin Park
- Advocacy in the lead up to 2024 elections

New Territory Plan

- “Outcome-based”
- Fewer opportunities for community input and influence
- Many elements removed from the Plan to supporting documents
- Clear intent to facilitate urban infill
 - Dual occupancy allowed in RZ1 for blocks $>800\text{m}^2$
- Low requirements for tree canopy cover in residential zones
- Increased building height limits around Curtin Square

Woden District Strategy

Key sites and change areas

- Woden north
- Curtin edge north and south
- North Curtin

All currently category 2 – “Change areas where detailed planning can proceed, consultation needs to occur, and change could happen within 0–10 years.”

Woden North

Any future development at this site should contribute to facing onto the future light rail corridor.

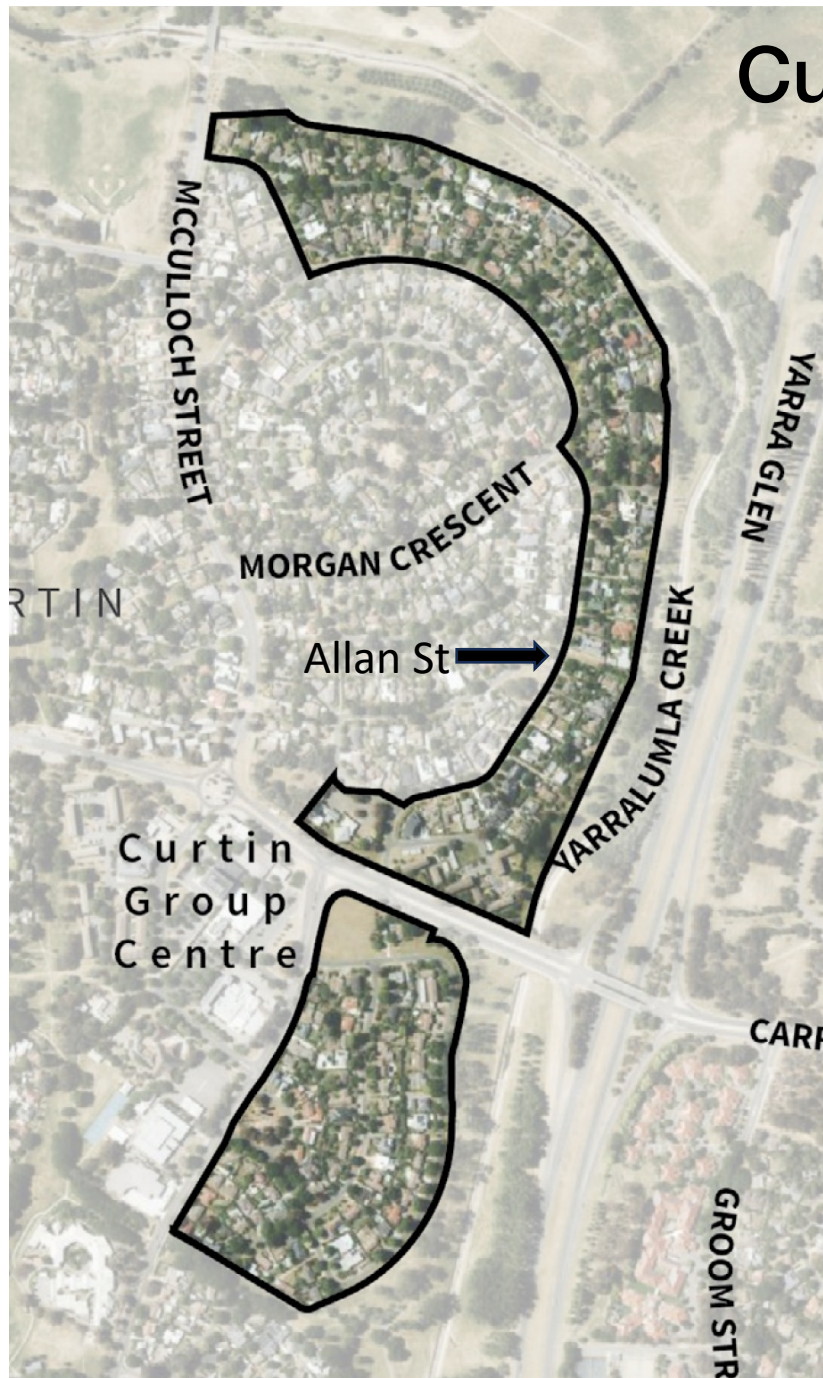


The interface with the adjoining open space along Yarra Glen and the Yarralumla Creek corridor is maximised by providing passive surveillance (through built forms), vehicular access and active travel.

Protection of the Woden Flood Memorial.

Opportunities considered to enhance the creek line for local area amenity and ecology.

Curtin edge north and south



Any future development at this site should contribute to a positive built frontage and address to Yarra Glen, improve access to and oversight of future light rail stops, and consider a biodiversity sensitive urban interface.

Dwellings such as townhouses with a 3-storey limit that can integrate with and overlook the blue-green network.

The interface with the adjoining open space along Yarra Glen and the Yarralumla Creek corridor is maximised by providing passive surveillance (through built forms), vehicular access and active travel.

Opportunities considered to enhance the creek line for local area amenity and ecology.



North Curtin

Studies are being done in preparation for housing along Yarra Glen. Development should acknowledge biodiversity values in this area including Golden Sun Moth habitat to the north.

Park between the urban edge and Yarralumla Creek responds to topography, add canopy trees, Water Sensitive Urban Design and play opportunities, as well as community gardens and urban farming.

Community, sport, recreation and retail facilities located prominently to create a destination and activity.

Opportunities considered to enhance the creek line for local area amenity.

North Curtin Residential Area



Studies are being done in preparation for housing along Yarra Glen.

The ACT Government has contracted

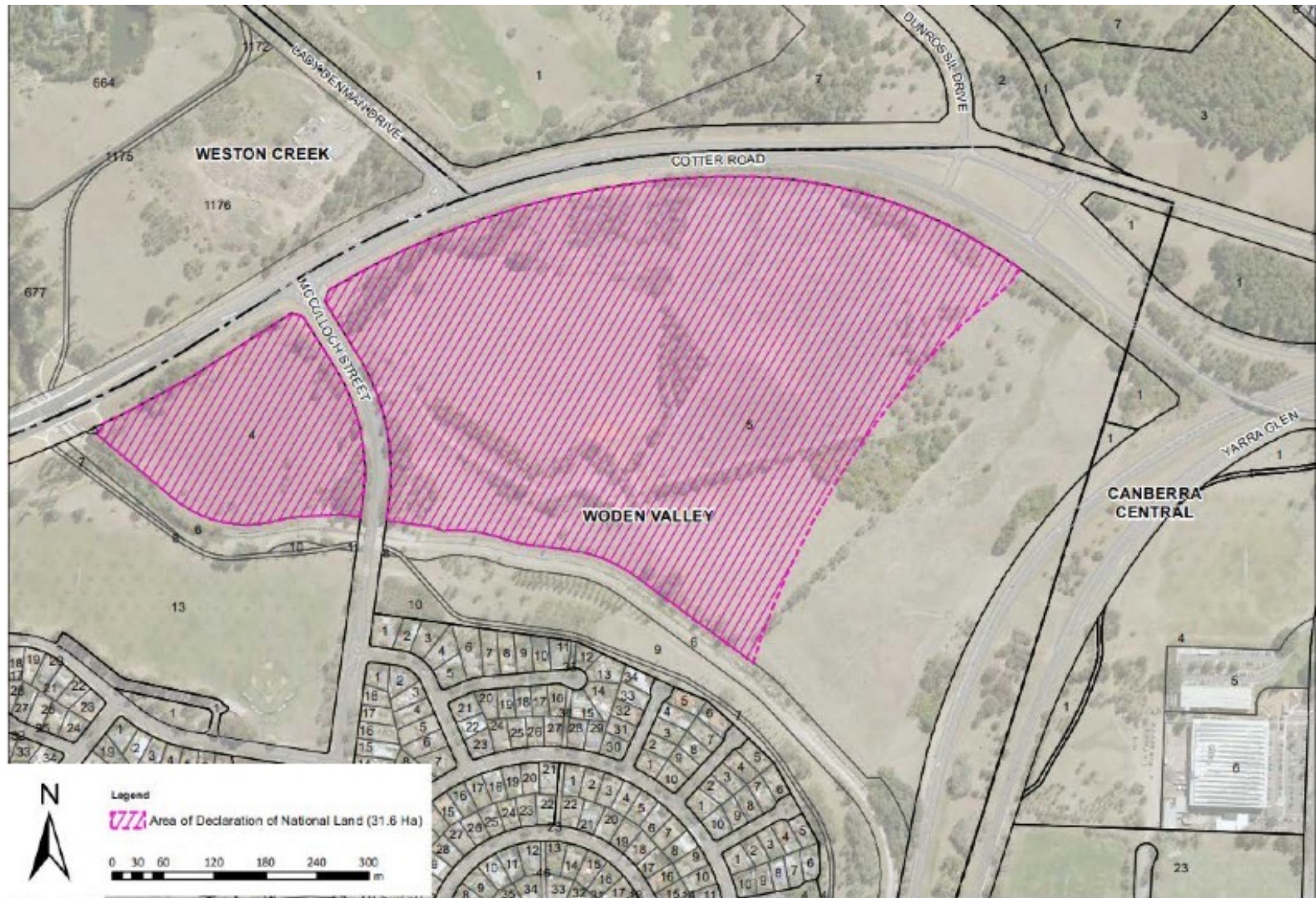
Architectus Australia

- detailed conditions of planning, design and development
 - 28 August 2023 until 30 June 2024 (option +6 months)

Communication Link

- community and stakeholder engagement
 - 10 July 2023 until 31 December 2024 (option +6 months)

Curtin Diplomatic Estate



Curtin Dementia Village Community consultation process

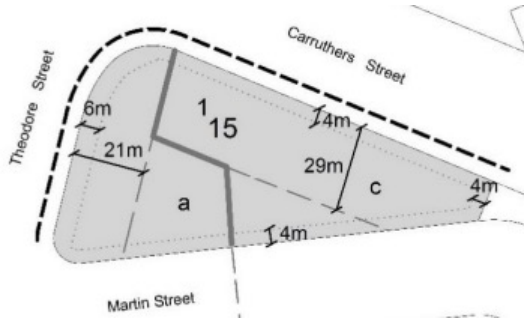
**Julia Tresidder represents the CRA on the
Stakeholder Advisory Panel**

- two meetings so far

YourSay site

<https://yoursayconversations.act.gov.au/curtin-dementia-village-site>

MyHome - relationships - Wesley Mission Proposal



ACT Precinct Code – Block constraints



A possible use of Block

- MyHome [myhomeincanberra.org.au]
 - Located on part of Uniting Church Block
 - ACT Government support
 - relationships with ACT health/carers organisations
- Co-located on Block with affordable rental housing
- Wesley Mission Proposal to develop both aspects submitted to ACT Govt – discussions ongoing
- Wesley Mission to present their proposal at a CRA public meeting in January or a later time to be announced in Dec/Jan

Nature reserve in Curtin Park



Curtin's 'green belt' provides substantial recreational and environmental amenity for our community.

It also has significant ecological value.

Woden – Blue-green network



Extracts from the Woden District Strategy

Curtin Residents Association Public Meeting 26 November 2023

Table 1: Woden initiatives – Blue-green network

Initiatives

1.1 Enhance connectivity corridors for priority areas of grassland and woodland and areas of threatened species and nature reserves including between Red Hill Nature Reserve and Yarralumla Creek tributaries and Scrivener Creek and connection between Oakey Hill Nature Reserve and Yarralumla Creek.

1.2 Enhance linkages from Mount Taylor Nature Reserve north to Oakey Hill Nature Reserve and through Curtin Park to link with Yarralumla Creek corridor.

1.3 Explore opportunities to integrate Yarralumla Creek into the blue-green network along Athllon Drive and Yamba Drive, including connectivity with Farrer Ridge at the head of the creek.

1.4 Undertake more detailed planning for the Yarralumla Creek corridor as an enhanced blue-green network connection, landscape feature and public park, aligned with planning for light rail corridor.

1.5 Implement enhanced water sensitive urban design (WSUD) and biodiversity sustainable urban design (BSUD) and improved tree canopy cover and permeability as part of all future development planning in the district, including around the town centre and light rail corridor.

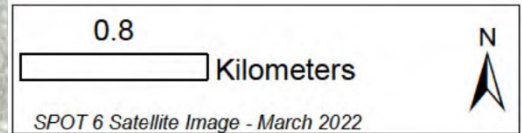
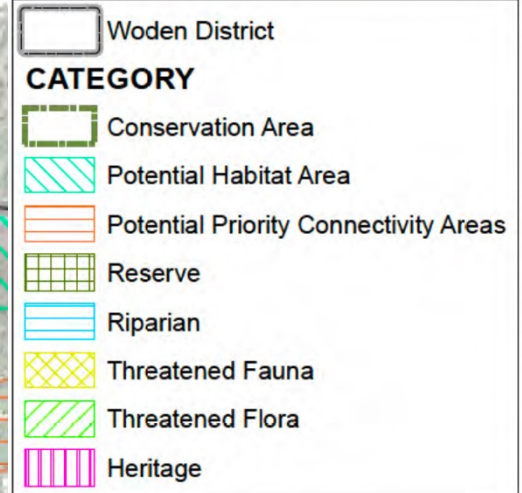
1.6 Continue works to address risks of flash flooding (1% AEP flood) around Woden town centre and Mawson group centre.

EHW Conservation, Protected & Connectivity: Woden District



South-east corner
of horse paddocks

Potential area for
a nature reserve



ACT
Government

Environment, Planning and
Sustainable Development

EPSDD August 2022

Curtin Residents Association Public Meeting
26 November 2023

Advocacy in the lead up to 2024 elections

Some ideas

ACT's planning system.

- Clear controls in the Territory Plan about soft planting area, particularly deep-root planting area; tree canopy cover; solar access; and privacy.
- No roads in the Yarralumla Creek corridor

North Curtin Residential Area

- Integration of landscape and buildings to produce an exemplar for development that's adapted to, and will mitigate the effects of, climate change

Yarralumla Creek corridor

- separate pedestrian and wheeled traffic
- remove dead trees; prune; new plantings; seats and picnic tables; 'naturalise' the Creek and reduce run-off to reduce the risk of flooding

Upgrade north-south path through Curtin

- widen to make a genuine shared path; plantings; seats and picnic tables

Curtin Park

- remove dead trees; prune; new plantings; seats and picnic tables

Improve the amenity of the area around Curtin Square

Express bus stop on Cotter Road

The CRA will be asking for your ideas; your feedback on these, and other, ideas; and your priorities.

