

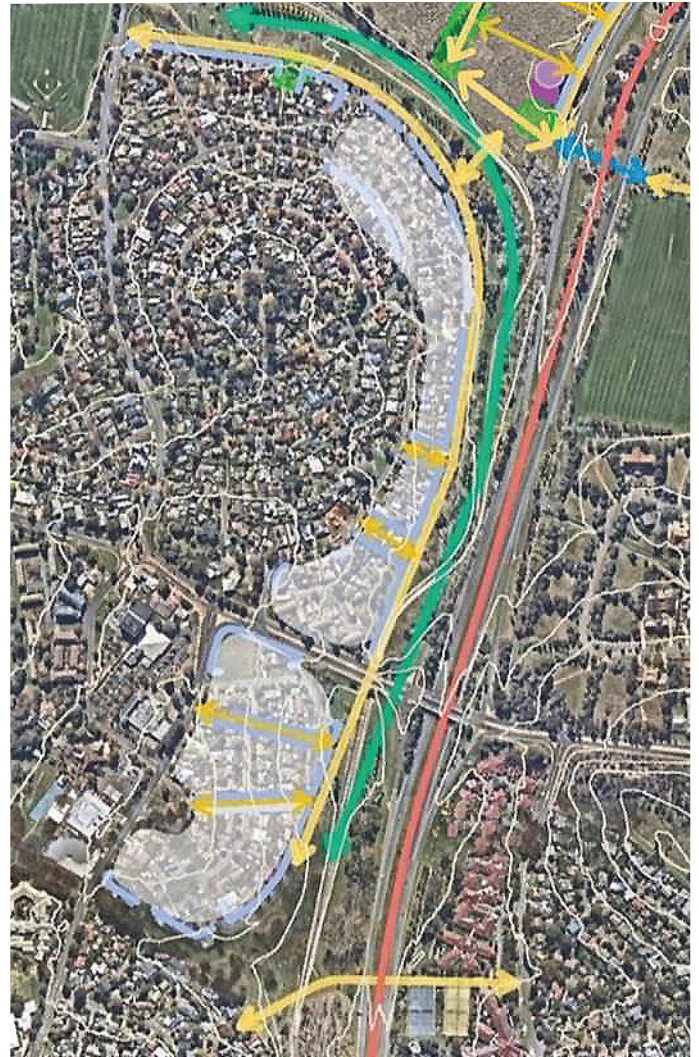
What do you think about a road running along and over Yarralumla Creek?

The ACT Government proposes this in its new Draft Woden District Strategy.

‘Curtin edge—north and south’ has been identified as a key site for possible change. An extract from the Strategy is overleaf.

The proposal for investigation includes an ‘edge street’ (shown in yellow) running the length of Yarralumla Creek with a bridge over the Creek to the developments in the North Curtin horse paddocks area.

This would threaten the ‘blue-green network’ (shown in green) that is available for activities and conservation, and reduce the amenity of the walking-cycling corridor. As well, the ‘edge street’ is also intended to permit 3-storey dwellings.



What do you think?

The Draft Woden District Strategy and the new Draft Territory Plan are open for comment until **3 March 2023**. Find these documents at:

yoursayconversations.act.gov.au/act-planning-review _ _ _ _



You can have your say online by:

- asking questions
- leaving a ‘quick comment’
- ‘liking’ an existing comment
- putting in a submission

at: yoursayconversations.act.gov.au/act-planning-review/draft-woden-district-strategy

You can also email the Curtin Residents Association committee with your views to help them in their submission at info@curtinresidents.asn.au. See the Association’s website at: www.curtinresidents.asn.au _ _ _ _



You can also discuss this with Ashley, a concerned local resident, at contact@ashleyarthur.com or on 0404 678 370. He wants to hear your views and if you have made a submission, either for or against.

Below is a copy of page 121 of the Draft Woden District Strategy showing an overview of proposed changes and the key to the map.

Curtin edge north and south

Any future development at this site should contribute to a positive built frontage and address to Yarra Glen, improve access to and oversight of light rail stations, and consider a biodiversity sensitive urban interface, protecting the potential re-naturalised creek corridor from impacts of urbanisation. Any projected loss of tree canopy cover due to redevelopment is to be offset within the local blue-green network and pocket parks. The potential change areas (indicated by white shading in the diagram below) will be subject to further investigation and consultation and are intended to permit dwellings such as townhouses with a 3-storey limit that can integrate with and overlook the blue-green network. The Curtin Edge would be a high amenity urban edge with safe connections to light rail and local area facilities.

A full investigation of planning, environmental and infrastructure issues should be undertaken with reference to the following principles:

- Light rail corridor – part of a city-wide rapid transit network.
- A new edge street to clarify the urban edge to Yarra Glen.
- Walkable street grid with clear sight lines which add canopy trees and create regular urban blocks of one hectare or less and more walkable access locally.
- Pocket parks which add canopy trees, WSUD and play opportunities.
- Community and retail facilities located prominently to create a destination and activity.
- Public activity hub at key locations including community and services, amenities and cafes.
- Built frontage contributing to street identity, spatial definition and oversight of new public links.
- Possible future connection.
- Consider opportunities to enhance the creek line for local area amenity and ecology – part of a city-wide blue-green network where possible
- Change area

Figure 39: Principles for Curtin edge north and south

